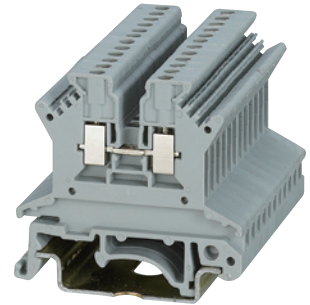


SUK-1.5

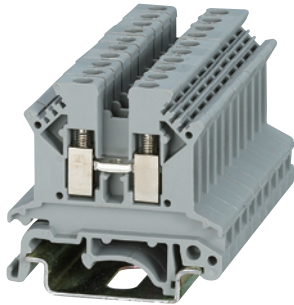


SUK series DIN-rail screw clamp terminal blocks can be used in circuit of AC50/60Hz, rated voltage 500V -1000V. Copper wires can be clamped without pre-treatment or ferrules can be used for splicing protection rated cross section from 0.75mm² to 150mm². The self-locking and anti-loosening protection is designed for long use under demanding conditions.

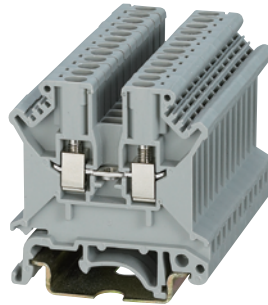
- High-grade, strain-crack and corrosion proof copper alloys to prevent electrolytic corrosion and rusting.
- Tin-plated current-carrying part ensures very low contact resistance and temperature rise.
- Insulation components are made of nylon PA66 with excellent pliability and fire resistance.
- Full line of terminal blocks, including fuse blocks, test disconnect blocks, multi level/conductor blocks, grounding blocks etc, can apply to different electric connection, allowing maximum flexibility and simple installation.
- Complete with universal accessories, such as jumper, end plate, partition plate, separating plate, marking tag etc.

Connection Diagram		
Thickness / Width / Height		4.2×43×41
Technical parameters		
Rated data	U (V)	550
	I (A)	17.5
	Section (mm ²)	1.5
Wire range	Rigid cable (mm ²)	0.14-1.5
	Soft cable (mm ²)	0.14-1.5
Screw Thread		M2
Tightening Torque Nm		0.22-0.25
Stripping length (mm)		7
Accessories		
End Plate		
		SUK-2.5XG
Separator Plate		
For electric separation of two neighboring adaptors, they may be inserted afterwards		
Partition Plate		
For visual and electric separation between neighboring terminal groups		
		SUK-G(ATP-UK)
Marking Tag		
Blank		ZB4
Pre-printed horizontally, 10-section		ZB4
Pre-printed vertically, 10-section		ZB4
Fixed Bridge		
Central terminal for transverse bridging, 10, can be divided, with 10 screws		
		UFB1 10-4
Insertion Bridge		
2 way		
3 way		
10 way		
End Clamp		
		SUK-2G2
		SUK-2G3

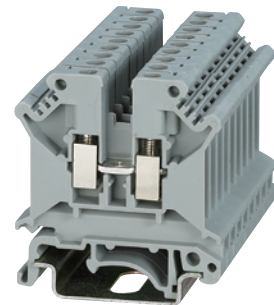
SUK-2.5X



SUK-2.5



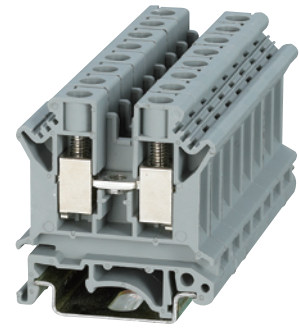
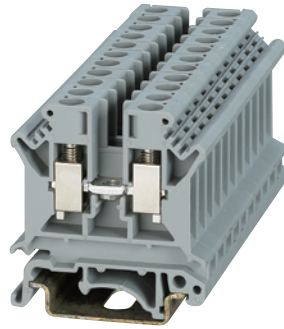
SUK-4



○—○—○	○—○—○	○—○—○
6×43×41	5.2×43×46.5	6.2×43×46.5
800	800	800
24	24	32
2.5	2.5	4
0.2-4	0.2-4	0.2-6
0.2-2.5	0.3-2.5	0.2-4
M3	M3	M3
0.5-0.8	0.5-0.8	0.5-0.8
7	8	8
SUK-2.5XG	SUK-G(DUK)	SUK-G(DUK)
SUK-GP1	SUK-GP(TS-K)	SUK-GP(TS-K)
SUK-G(ATP-UK)	SUK-G(ATP-UK)	SUK-G(ATP-UK)
ZB6 ZB6 ZB6	ZB5 ZB5 ZB5	ZB6 ZB6 ZB6
UFB1 10-6	UFB1 10-5	UFB1 10-6
UEB 2-6 UEB 3-6 UEB 10-6	UEB 2-5 UEB 3-5 UEB 10-5	UEB 2-6 UEB 3-6 UEB 10-6
SUK-2G2	SUK-2G2	SUK-2G2
SUK-2G3	SUK-2G3	SUK-2G3



	SUK-6	SUK-10
--	-------	--------

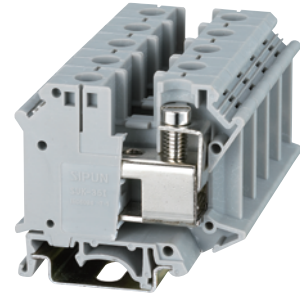
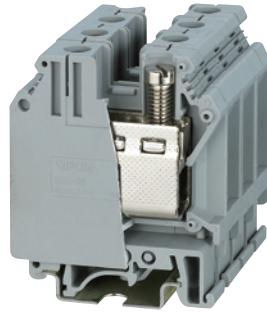
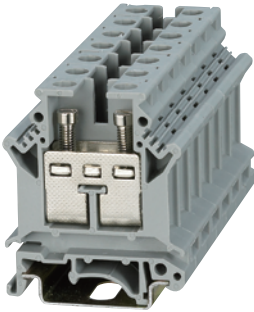


Wiring diagram			
Thickness / Width / Height		8.2×43×46	10.2×43×46.5
Technical parameters			
Rated data	U (V)	800	800
	I (A)	41	57
	Section (mm ²)	6	10
Wire range	Rigid cable (mm ²)	0.2-10	0.5-16
	Soft cable (mm ²)	0.2-6	0.5-10
Screw Thread		M4	M4
Tightening Torque Nm		1.5-1.8	1.5-1.8
Stripping length (mm)		10	10
Accessories			
End Plate			
		SUK-G(DUK)	SUK-G(DUK)
Separator Plate			
For electric separation of two neighboring adaptors, they may be inserted afterwards			
		SUK-GP(TS-K)	SUK-GP(TS-K)
Partition Plate			
For visual and electric separation between neighboring terminal groups			
		SUK-G(ATP-UK)	SUK-G(ATP-UK)
Marking Tag			
Blank			ZB8
Pre-printed horizontally, 10-section			ZB8
Pre-printed vertically, 10-section			ZB8
Fixed Bridge			
Central terminal for transverse bridging, 10, can be divided, with 10 screws			
		UFB1 10-8	UFB1 10-10
Insertion Bridge			
2 way			
3 way			
10 way			
		UEB 2-8	UEB 2-10
		UEB 3-8	UEB 10-10
		UEB 10-8	
End Clamp			
		SUK-2G2	SUK-2G2
		SUK-2G3	SUK-2G3

SUK Series

DIN rail Screw Clamp Terminal Block

SUK-16	SUK-35	SUK-35I
--------	--------	---------

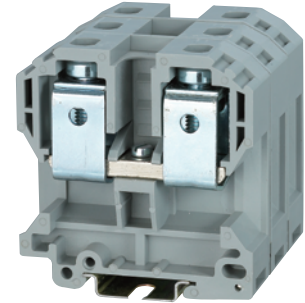


○—○—○	○—○—○	○—○—○
12.2×42.5×51	15.2×51×57.5	15.2×55×50
800	1000	1000
76	125	150
16	35	35
2.5-25	0.75-50	4-50
4-16	0.75-35	4-35
M4	M6	M6
1.5-1.8	3.2-3.7	3.2-3.7
11	16	16

SUK-16G		
SUK-GP(TS-K)	SUK-GP(TS-K)	SUK-GP(TS-K)
SUK-G(ATP-UK)		
ZB10	ZB10	ZB10
ZB10	ZB10	ZB10
ZB10	ZB10	ZB10
UFB1 10-12	UFB1 2-15 UFB1 3-15	UFB1 2-15I UFB1 3-15I
UEB 10-12	UEB 2-5 UEB 10-5	UEB 2-15 UEB 10-15
SUK-2G2	SUK-2G2	SUK-2G2
SUK-2G3	SUK-2G3	SUK-2G3



	SUK-50	SUK-70
--	--------	--------

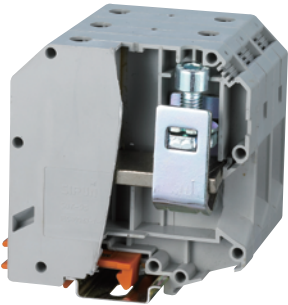


Wiring diagram			
Thickness / Width / Height		20×71×76.5	22.5×76.5×78.5
Technical parameters			
Rated data	U (V)	1000	1000
	I (A)	150	192
	Section (mm ²)	50	70
Wire range	Rigid cable (mm ²)	16-50	25-70
	Soft cable (mm ²)	25-50	25-70
Screw Thread		M6 (Hexagon screw)	M8 (Hexagon screw)
Tightening Torque Nm		6-8	6-12
Stripping length (mm)		24	24
Accessories			
End Plate			

Separator Plate			
For electric separation of two neighboring adaptors, they may be inserted afterwards			
Partition Plate			
For visual and electric separation between neighboring terminal groups			
Marking Tag			
Blank		ZB10	ZB3
Pre-printed horizontally, 10-section		ZB10	ZB3
Pre-printed vertically, 10-section		ZB10	ZB3
Fixed Bridge			
Central terminal for transverse bridging, 10, can be divided, with 10 screws		UFB1 2-20 UFB1 3-20	70L10
Insertion Bridge			
2 way			
3 way			
10 way			
End Clamp			
		SUK-2G2	SUK-2G2
		SUK-2G3	SUK-2G3

SUK-95

SUK-150



25×84×90.5



32×101.5×111

1000

1000

232

309

95

150

25-95

35-150

35-95

50-150

M8 (Hexagon screw)

M10 (Hexagon screw)

15-20

25-30

33

40

ZB10

ZB10

ZB10

ZB10

ZB10

ZB10

SUK-2G2

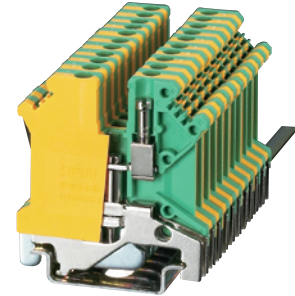
SUK-2G2

SUK-2G3

SUK-2G3



SUK-2.5JD

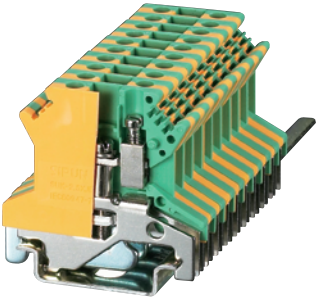
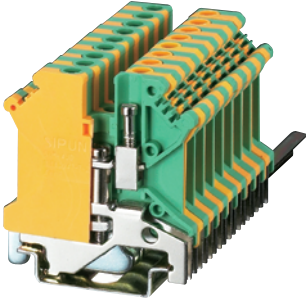
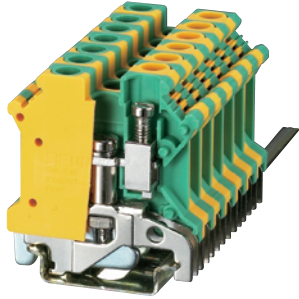





- Grounding blocks are supplied with a standard yellow/green housing for easy identification and accept standard marking tags.
- Grounding blocks clamp mechanically onto the DIN rail by tightening the center mounting screw, making a reliable connection between the terminals and the DIN rail.
- The rail serves as a busbar and automatically distributes ground potential to all other terminals on the same rail.

Wiring diagram			
Thickness/Width/Height		5.2×43×46	
Technical parameters			
Rated data	U (V)		
	I (A)		
Wire range	Section (mm ²)	2.5	
	Rigid cable (mm ²)	0.2-4	
	Softcable (mm ²)	0.2-2.5	
Screw Thread		M3	
Tightening Torque Nm		0.5-0.8	
Stripping length (mm)		8	
Accessories description		Item	
With universal mounting foot rails can be installed		G32-18	
		G32-15	
		TH35-7.5	
		TH35-15	
Marking Tag			
Blank		ZB5	
Pre-printed horizontally, 10-section		ZB5	
Pre-printed vertically, 10-section		ZB5	
End Clamp			
			SUK-2G2
			SUK-2G3

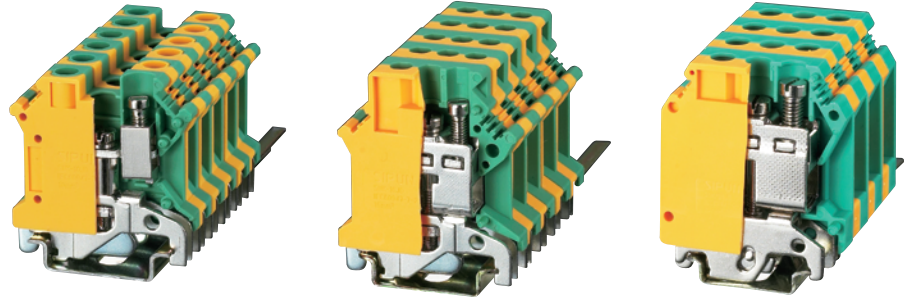
SUK Series

DIN rail Screw Clamp Terminal Block

SUK-2.5XJD	SUK-4JD	SUK-6JD
		
		
6.2×42.5×40.5	5.6×42.5×46	8.2×42.5×46
2.5	4	6
0.2-4	0.2-6	0.2-10
0.2-2.5	0.2-4	0.2-6
M3	M3	M4
0.5-0.7	0.5-0.8	1.5-1.8
7	9	10
Item	Item	Item
G32-18 G32-15 TH35-7.5 TH35-15	G32-18 G32-15 TH35-7.5 TH35-15	G32-18 G32-15 TH35-7.5 TH35-15
ZB6 ZB6 ZB6	ZB6 ZB6 ZB6	ZB8 ZB8 ZB8
SUK-2G2	SUK-2G2	SUK-2G2
SUK-2G3	SUK-2G3	SUK-2G3

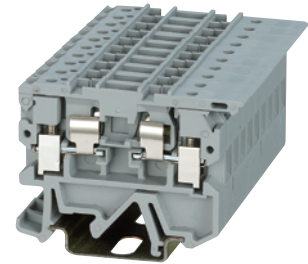


SUK-10JD	SUK-16JD	SUK-35JD
----------	----------	----------












Wiring diagram				
Thickness/Width/Height	10.2×42.5×46	12.2×42.5×53	15.2×50.5×61	
Technical parameters				
Rated data	U (V)			
	I (A)			
	Section (mm ²)	10	16	35
Wire range	Rigid cable (mm ²)	0.5-16	2.5-25	0.75-35
	Soft cable (mm ²)	0.5-10	4-16	0.75-35
Screw Thread	M4	M4	M6	
Tightening Torque Nm	1.5-1.8	1.5-1.8	3.2-3.7	
Stripping length (mm)	10	11	15	
Accessories description	Item	Item	Item	
With universal mounting foot rails can be installed	G32-18	G32-18	G32-18	
	G32-15	G32-15	G32-15	
	TH35-7.5	TH35-7.5	TH35-7.5	
	TH35-15	TH35-15	TH35-15	
Marking Tag				
Blank		ZB10	ZB10	ZB10
Pre-printed horizontally, 10-section		ZB10	ZB10	ZB10
Pre-printed vertically, 10-section		ZB10	ZB10	ZB10
End Clamp				
		SUK-2G2	SUK-2G2	SUK-2G2
		SUK-2G3	SUK-2G3	SUK-2G3

SUK-2.5RD



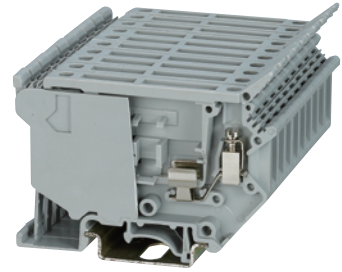
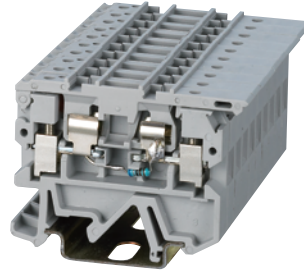
- The fuse blocks are used in electrical and control systems, which require fuse protection. SUK-2.5RD, 2.5RD/X, 4RD, 4RD/X are lever type fuse blocks. SUK-10RD, 10RD/X are screw cap type fuse blocks.
- Fuse blocks with suffix (/X) are with status indicator, which will light up if a fuse blown out.

Wiring diagram		
Thickness / Width / Height		8×58.5×43.8
Technical parameters		
Rated data	U (V)	500
	I (A)	6.3
	Section (mm ²)	2.5
Wire range	Rigid cable (mm ²)	0.2-4
	Soft cable (mm ²)	0.2-2.5
Screw Thread		M4
Tightening Torque Nm		1.5-1.8
Stripping length (mm)		11
Accessories description		Item
End Plate		 SUK-2.5RGD
Marking Tag		
Blank		ZB8
Pre-printed horizontally, 10-section		ZB8
Pre-printed vertically, 10-section		ZB8
Fixed Bridge		
Used for terminal central realize transverse bridge, 10, separable, with 10 screws		
Insertion Bridge		
2 way		UEB 2-8
3 digit		UEB 3-8
10 way		UEB 10-8
Fuse Link		
		5×25
End Clamp		
		SUK-2G2
		SUK-2G3

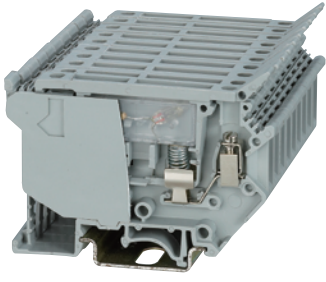
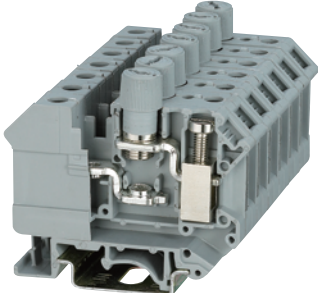
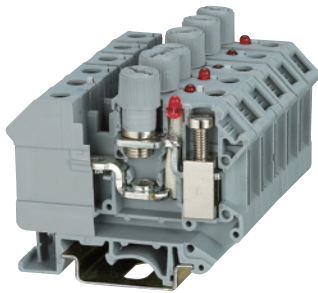





SUK-2.5RD/X

SUK-4RD

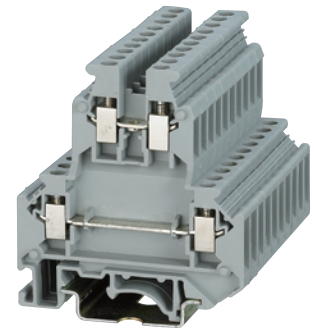


Wiring diagram			
Thickness / Width / Height		8×58.5×43.8	8×73×56
Technical parameters			
Rated data	U (V)	500	800
	I (A)	6.3	6.3
	Section(mm ²)	2.5	4
Wire range	Rigid cable(mm ²)	0.2-4	0.2-6
	Soft cable(mm ²)	0.2-2.5	0.2-4
Screw Thread		M4	M3
Tightening Torque Nm		1.5-1.8	0.5-0.8
Stripping length (mm)		10	8
Accessories description		Item	
End Plate		SUK-2.5RGD	
Marking Tag			
Blank		ZB8	ZB8
Pre-printed horizontally,10-section		ZB8	ZB8
Pre-printed vertically,10-section		ZB8	ZB8
Fixed Bridge			
Used for terminal central realize transverse bridge, 10, separable, with 10 screws			
Insertion Bridge			
2 way		UEB 2-8	UEB 2-8
3 way		UEB 3-8	UEB 3-8
10 way		UEB 10-8	UEB 10-8
Fuse Link		5×25	5×25
End Clamp			
		SUK-2G2	SUK-2G2
		SUK-2G3	SUK-2G3

SUK-4RD/X	SUK-10RD	SUK-10RD/X
		
		
8×73×56	12.2×62.5×56	12.2×62.5×56
800	800	800
6.3	10	10
4	10	10
0.2-6	0.5-16	0.5-16
0.2-4	0.5-10	0.5-10
M3	M4	M4
0.5-0.8	1.2-1.8	1.2-1.8
8	11	11
ZB8	ZB8	ZB8
ZB8	ZB8	ZB8
ZB8	ZB8	ZB8
	UFB1 10-12	UFB1 10-12
UEB 2-8		
UEB 3-8	UEB 10-12	UEB 10-12
UEB 10-8		
5×25	5×20	5×20
SUK-2G2	SUK-2G2	SUK-2G2
SUK-2G3	SUK-2G3	SUK-2G3



SUK-4/2-2



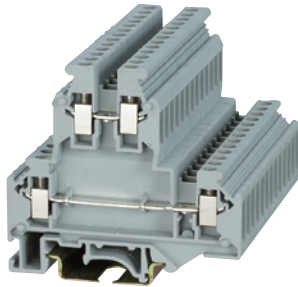
- The multi level/conductor terminal blocks are used to connect multiple wires in a single terminal block, increasing wiring density when space is limited, and distributing potentials simply.
- Disconnect & Test blocks are used to isolate circuits quickly and easily to perform troubleshooting or off-line maintenance.

Wiring diagram		
Thickness / Width / Height		6.2×56.5×61.5
Technical parameters		
Rated data	U (V)	500
	I (A)	32
	Section (mm ²)	4
Wire range	Rigid cable (mm ²)	0.2-4
	Soft cable (mm ²)	0.2-4
Screw Thread		M3
Tightening Torque Nm		0.6-0.8
Stripping length (mm)		8
Accessories description		Item
End Plate		SUK-4/2-2G
Separator Plate		
For electric separation of two neighboring adaptors, they may be inserted afterwards		SUK-GP1
Marking Tag		
Blank		ZB6
Pre-printed horizontally, 10-section		ZB6
Pre-printed vertically, 10-section		ZB6
Fixed Bridge		
Central terminal for transverse bridging, 10, can be divided, with 10 screws		UFB1 10-6
Insertion Bridge		
2 way		UEB 2-6
3 way		UEB 3-6
10 way		UEB 10-6
End Clamp		
		SUK-2G2
		SUK-2G3

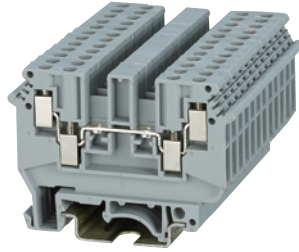
SUK Series

DIN rail Screw Clamp Terminal Block

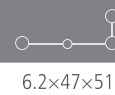
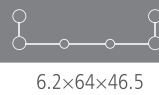
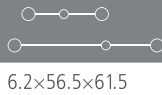
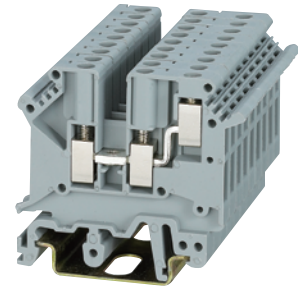
SUK-4/2-2L

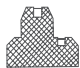
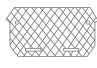
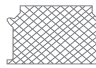
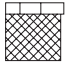
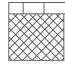



SUK-4/2×2



SUK-4/1×2



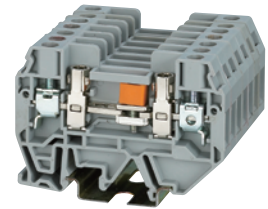
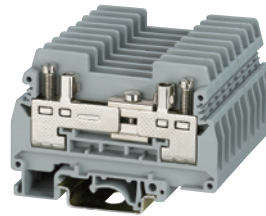
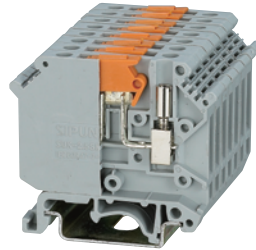
6.2×56.5×61.5	6.2×64×46.5	6.2×47×51
500	500	500
32	32	32
4	2.5	4
0.2-4	0.2-4	0.2-4
0.2-4	0.2-4	0.2-4
M3	M3	M3
0.6-0.8	0.6-0.8	0.6-0.8
8	8	8
Item	Item	Item
SUK-4/2-2LG 	SUK-4/2×2G 	SUK-4/1×2G 
SUK-GP1 	SUK-GP1 	SUK-GP(TS-K) 
ZB6 ZB6 ZB6	ZB6 ZB6 ZB6	ZB6 ZB6 ZB6
UFB1 10-6	UFB1 10-6	UFB1 10-6
UEB 2-6 UEB 3-6 UEB 10-6	UEB 2-6 UEB 3-6 UEB 10-6	UEB 2-6 UEB 3-6 UEB 10-6
SUK-2G2	SUK-2G2	SUK-2G2
SUK-2G3	SUK-2G3	SUK-2G3



SUK-2.5SK

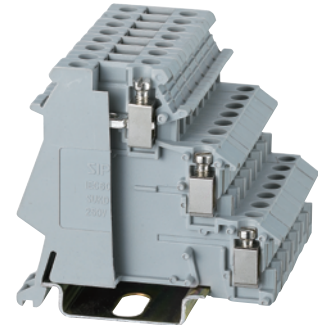
SUK-6S

SUK-6SN



Wiring diagram				
Thickness / Width / Height		6.2×52×46	8.2×72.8.×51	8×68×48.5
Technical parameters				
Rated data	U (V)	500	400	400
	I (A)	16	57	57
	Section (mm ²)	2.5	6	6
Wire range	Rigid cable (mm ²)	0.2-4	0.2-10	0.2-10
	Soft cable (mm ²)	0.2-4	0.2-6	0.2-6
Screw Thread		M3	M3	M3
Tightening Torque Nm		0.5-0.8	0.6-0.8	0.6-0.8
Stripping length (mm)		8	13	13
Accessories description		Item	Item	Item
End Plate			SUK-6SG	SUK-6SNG
Separator Plate				
For electric separation of two neighboring adaptors, they may be inserted afterwards				
Marking Tag				
Blank		ZB6	ZB8	ZB6
Pre-printed horizontally, 10-section		ZB6	ZB8	ZB6
Pre-printed vertically, 10-section		ZB6	ZB8	ZB6
Fixed Bridge				
Central terminal for transverse bridging, 10, can be divided, with 10 screws			UFB1 10-RTK/S	UFB1 10-RTK/S
Insertion Bridge				
2 way		UEB 2-6	UEB 2-8	UEB 2-8
3 way		UEB 3-6	UEB 3-8	UEB 3-8
10 way		UEB 10-6	UEB 10-8	UEB 10-8
End Clamp				
		SUK-2G2	SUK-2G2	SUK-2G2
		SUK-2G3	SUK-2G3	SUK-2G3

SUKD-2.5/3-3



- The triple level terminals blocks are an ideal choice for control systems where sensors and actuator applications are involved. The simplified three level connections tremendously increase wiring density in the circuit.
- Sensor blocks with suffix (/X) are with status indicator.

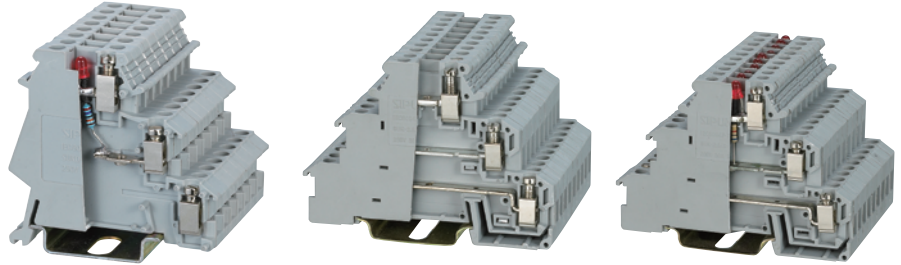
Wiring diagram		
Thickness/Width/Height		6.2×55×54
Technical parameters		
Rated data	U (V)	250
	I (A)	26
	Section (mm ²)	2.5
Wire range	Rigid cable (mm ²)	0.2-4
	Soft cable (mm ²)	0.2-2.5
Screw Thread		M3
Tightening Torque Nm		0.5-0.8
Stripping length (mm)		8
Accessories description		Item
With universal mounting foot rails can be installed		G32-18 G32-15 TH35-7.5 TH35-15
End Plate		
Marking Tag		
Blank		ZB6
Pre-printed horizontally, 10-section		ZB6
Pre-printed vertically, 10-section		ZB6
Fixed Bridge		
Central terminal for transverse bridging, 10, can be divided, with 10 screws		UFB1 10-6
Side adaptor		
2 way		UEB 2-6
3 way		UEB 3-6
10 way		UEB 10-6
End Clamp		
		SUK-2G2
		SUK-2G3



SUKD-2.5/3-3X

SUK-2.5/3-3

SUK-2.5/3-3X



Wiring diagram				
Thickness / Width / Height		6.2×55×54	6.2×72.5×54	6.2×72.5×54
Technical parameters				
Rated data	U (V)	250	250	250
	I (A)	26	30	30
	Section (mm ²)	2.5	2.5	2.5
Wire range	Rigid cable (mm ²)	0.2-4	0.2-4	0.2-4
	Soft cable (mm ²)	0.2-2.5	0.2--0.25	0.2-2.5
Screw Thread		M3	M3	M3
Tightening Torque Nm		0.5-0.8	0.5-0.8	0.5-0.8
Stripping length (mm)		8	8	8
Accessories description		Item	Item	Item
With universal mounting foot rails can be installed		G32-18 G32-15 TH35-7.5 TH35-15	G32-18 G32-15 TH35-7.5 TH35-15	G32-18 G32-15 TH35-7.5 TH35-15
End Plate				
Marking Tag				
Blank			ZB6	ZB6
Pre-printed horizontally,10-section			ZB6	ZB6
Pre-printed vertically,10-section			ZB6	ZB6
Fixed Bridge				
Central terminal for transverse bridging , 10 , can be divided , with 10 screws			UFB1 10-6	UFB1 10-6
Insertion Bridge				
2 way			UEB 2-6	UEB 2-6
3 way			UEB 3-6	UEB 3-6
10 way			UEB 10-6	UEB 10-6
End Clamp				
		SUK-2G2	SUK-2G2	SUK-2G2
		SUK-2G3	SUK-2G3	SUK-2G3